

**Anti-Cat IgG F(c) (Alkaline Phosphatase Conjugated) Secondary Antibody**  
**Rabbit Polyclonal, Alkaline Phosphatase (Calf Intestine)**  
**Catalog # ASR2941****Specification****Anti-Cat IgG F(c) (Alkaline Phosphatase Conjugated) Secondary Antibody - Product Information**

Description	<b>Anti-CAT IgG F(c) (RABBIT) Antibody</b>
Host	<b>Alkaline Phosphatase Conjugated</b>
Conjugate	<b>Rabbit</b>
Target Species	<b>Alkaline Phosphatase (Calf Intestine)</b>
Clonality	<b>Cat</b>
Application	<b>Polyclonal</b>
Application Note	<b>WB, E, IC</b>
	<b>ELISA 1:4,000-1:16,000;Western Blot</b>
	<b>1:500-1:2,500;Immunochemistry</b>
	<b>1:200-1:1,000</b>
Physical State	<b>Liquid (sterile filtered)</b>
Host Isotype	<b>IgG</b>
Target Isotype	<b>IgG F(c)</b>
Buffer	<b>0.05 M Tris Chloride, 0.15M Sodium Chloride, 0.001M Magnesium Chloride, 0.0001M Zinc Chloride, 50% (v/v) Glycerol; pH 8.0</b>
Immunogen	<b>Cat IgG F(c) fragment</b>
Stabilizer	<b>10 mg/mL Bovine Serum Albumin (BSA) - Immunoglobulin and Protease free</b>
Preservative	<b>0.01% (w/v) Sodium Azide</b>

**Anti-Cat IgG F(c) (Alkaline Phosphatase Conjugated) Secondary Antibody - Additional Information****Shipping Condition**

Wet Ice

**Purity**

This product was prepared from monospecific antiserum by immunoaffinity chromatography using Cat IgG coupled to agarose beads followed by solid phase adsorption(s) to remove any unwanted reactivities. Assay by immunoelectrophoresis resulted in a single precipitin arc against anti-Alkaline Phosphatase (calf intestine), anti-Rabbit Serum, Cat IgG, Cat IgG F(c) and Cat Serum. No reaction was observed against Cat IgG F(ab')<sub>2</sub>.

**Storage Condition**

Store vial at 4° C before opening. DO NOT FREEZE. This product is stable at 4° C as an undiluted liquid. Dilute only prior to immediate use. Freezing alkaline phosphatase conjugates will result in a substantial loss of enzymatic activity.

**Precautions Note**

This product is for research use only and is not intended for therapeutic or diagnostic applications.

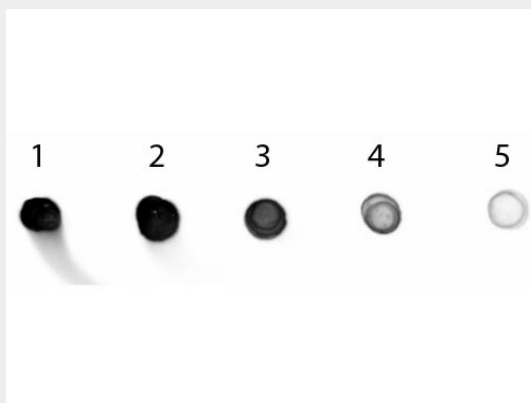
## **Anti-Cat IgG F(c) (Alkaline Phosphatase Conjugated) Secondary Antibody - Protein Information**

## **Anti-Cat IgG F(c) (Alkaline Phosphatase Conjugated) Secondary Antibody - Protocols**

Provided below are standard protocols that you may find useful for product applications.

- [Western Blot](#)
- [Blocking Peptides](#)
- [Dot Blot](#)
- [Immunohistochemistry](#)
- [Immunofluorescence](#)
- [Immunoprecipitation](#)
- [Flow Cytometry](#)
- [Cell Culture](#)

## **Anti-Cat IgG F(c) (Alkaline Phosphatase Conjugated) Secondary Antibody - Images**



Dot Blot of Rabbit anti-Cat IgG Fc Antibody Alkaline Phosphatase Conjugated. Antigen: Cat IgG. Load: Lane 1 - 200 ng Lane 2 - 66.7 ng Lane 3 - 22.2 ng Lane 4 - 7.41 ng Lane 5 - 2.47 ng. Primary antibody: n/a. Secondary antibody: Rabbit anti-Cat IgG Fc Antibody Alkaline Phosphatase Conjugated at 1:1,000 for 60 min at RT. Block: MB-070 for 1 HR at RT.